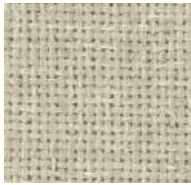
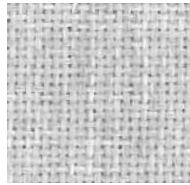


# Tessuti per pannelli della linea "Comfort"

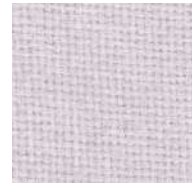
## Cara Fabric Colour Range 2015



Lomond EJ192  
LR = 34.43



Glass EJ004  
LR = 46.32



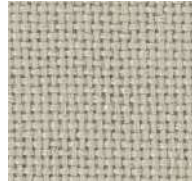
Clan EJ169  
LR = 62.3



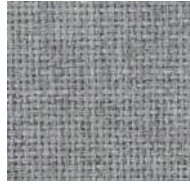
Vit EJ184  
LR = 86.31



Beltane EJ193  
LR = 30.29



Shetland EJ191  
LR = 27.95



Hillswick EJ190  
LR = 21.1



Denny EJ196  
LR = 20.11



Maree EJ195  
LR = 32.73



Chaucer EJ172  
LR = 25.94



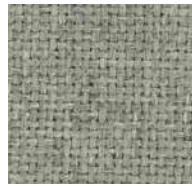
Ronay EJ189  
LR = 17.14



Easdale EJ188  
LR = 9.42



Austen EJ173  
LR = 39.8



Spray EJ033  
LR = 16.46



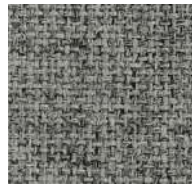
Lora EJ187  
LR = 8.35



Dolphin EJ105  
LR = 35.65



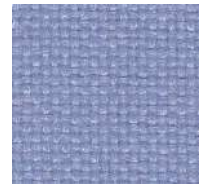
Lerwick EJ194  
LR = 12.2



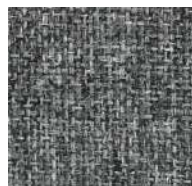
Portland EJ016  
LR = 14.26



Fair Isle EJ186  
LR = 20.67



Inverness EJ175  
LR = 31.48



Lead EJ104  
LR = 18.39



Staffa EJ185  
LR = 16.18



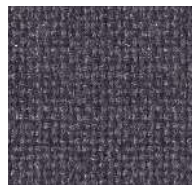
Galilee EJ125  
LR = 18.96



Adriatic EJ154  
LR = 8.79



Lossie EJ197  
LR = 9.53



Merrick EJ048  
LR = 12.23



Carron EJ015  
LR = 8.67



Cluanie EJ180  
LR = 4.13



Tummel EJ038  
LR = 6.65



Pitlochry EJ076  
LR = 8.59



Walten EJ011  
LR = 3.46



Black EJ138  
LR = 1.65

# Tessuti per pannelli della linea "Comfort"

## Lucia Fabric Colour Range 2015

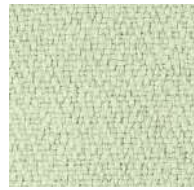
## eco-fabric



Adobo YB165  
LR = 85.8



Oyster YB107  
LR = 64.8



Turtle YB098  
LR = 39.14



Apple YB096  
LR = 37.16



Solano YB088  
LR = 36.13



Madura YB156  
LR = 43.08



Sandstorm YB302  
LR = 22.78



Reef YB085  
LR = 45.6



Aruba YB093  
LR = 37.39



Belize YB105  
LR = 10.49



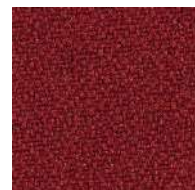
Campeche YB301  
LR = 27.43



Bridgetown YB102  
LR = 11.34



Diablo YB101  
LR = 6.99



Jamaica YB027  
LR = 7.2



Calypso YB106  
LR = 6.4



Windjammer YB047  
LR = 9.02



Taboo YB045  
LR = 4.15



Tobago YB030  
LR = 3.11



Lobster YB087  
LR = 11.55



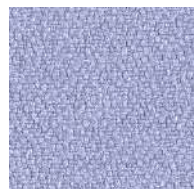
Tortuga YB168  
LR = 30.46



Montserrat YB011  
LR = 7.94



Arecibo YB099  
LR = 45.31



Bermuda YB084  
LR = 32.9



Mauve YB069  
LR = 14.64



Tarot YB090  
LR = 3.01



Ocean YB100  
LR = 3.56



Scuba YB089  
LR = 6.37



Bluebell YB097  
LR = 16.91



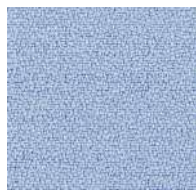
Martinque YB004  
LR = 12.79



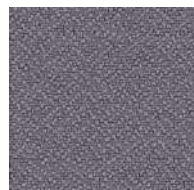
Steel YB095  
LR = 23.03



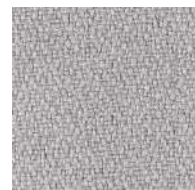
Bluefield YB021  
LR = 8.27



Marianna YB157  
LR = 33.48



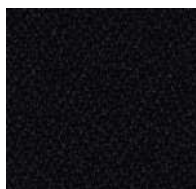
Tequila YB038  
LR = 14.56



Slip YB094  
LR = 27.94



Blizzard YB108  
LR = 12.23



Havana YB009  
LR = 2.26



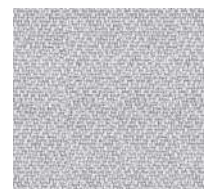
Sombrero YB046  
LR = 4.36



Costa YB026  
LR = 3.38



Buru YB170  
LR = 24.37



Rum YB086  
LR = 38.32



# Tessuti per pannelli della linea “Comfort”

## Cara

Composition	100% Polypropylene
Weight	220g/m <sup>2</sup> ±5% (375g/lin.m. ±5%)
Width	170cm minimum
Abrasion Resistance	Grade A tested in accordance with EN 14465:2003 with a 5 year guarantee of wearability (full details available)
Flammability	BS 476 Part 7 Class 1, BS EN 1021 - 1:2006 (cigarette). <i>Note: Flammability performance is dependent on components used.</i>
Light Fastness	6 (ISO 105 - B02:1999)
Fastness to Rubbing	Wet: 4 Dry: 4 (ISO 105 - X12:2002)
Maintenance	Vacuum regularly. Wipe clean with a damp cloth or shampoo using proprietary upholstery shampoo.
Colour Matching	Batch to batch variations in shade may occur within commercial tolerances.

Further information available on request.  
Please note that ultimate seam performance is dependent on seam construction, and needle and thread type. We recommend that appropriate sewing advice be taken.

## Lucia

Composition	100% Recycled Polyester. Non metallic dyestuffs
Weight	260g/m <sup>2</sup> ±5% (440g/lin.m. ±5%)
Width	170cm minimum
Flammability	BS 476 Part 7 Class 1, BS EN 1021 - 1:2006 (cigarette), BS EN 1021 - 2:2006 (match), BS 7176 : 2007 Low Hazard <i>Note: Flammability performance is dependent on components used.</i>
Light Fastness	6 (ISO 105 - B02:1999)
Fastness to Rubbing	Wet: 4 Dry: 4 (ISO 105 - X12:2002)
Maintenance	Vacuum regularly. Wipe clean with a damp cloth or shampoo using proprietary upholstery shampoo.
Colour Matching	Batch to batch variations in shade may occur within commercial tolerances.

Lucia should be tested as a directional fabric due to the light reflecting properties of polyester in a crepe weave construction. Care should be taken on application to establish shade variation in accordance with direction.

Further information available on request.  
Please note that ultimate seam performance is dependent on seam construction, and needle and thread type. We recommend that appropriate sewing advice be taken.

The Lucia range for screens is made from 100% recycled materials saving virgin raw materials, reducing waste to landfill and minimising our damage to the environment. Made using sustainable manufacturing techniques, including green electricity, comprehensive energy and effluent management, borehole water and on-going waste saving initiatives, Lucia leaves a lighter environmental footprint.

### A few of the areas of application of Wallsorba acoustic panels:

- Offices
- Music rooms
- Studios
- Sports Halls
- Classrooms
- Theatres
- Lecture Rooms
- Cinemas
- Conference Rooms
- Hearing Test Rooms
- Computer Rooms
- Workshops
- Village Halls
- Firing Ranges
- Training Rooms
- Police Station Evidence Rooms